

**SAHMRI**  
SOUTH AUSTRALIAN HEALTH AND  
MEDICAL RESEARCH INSTITUTE

**2012**

.....  
**ANNUAL REPORT**  
.....





2012

**SAHMRI**  
SOUTH AUSTRALIAN HEALTH AND  
MEDICAL RESEARCH INSTITUTE

# ANNUAL REPORT



# CONTENTS

<b>CHAIRMAN'S REPORT</b>	<b>5</b>
<b>EXECUTIVE DIRECTOR'S REPORT</b>	<b>6</b>
<b>ABOUT THE INSTITUTE</b>	<b>8</b>
• Overview	
• Establishment of SAHMRI	
• Building research capacity	
• Vision	
• Mission	
• Values	
<b>2011 - 12 HIGHLIGHTS</b>	<b>10</b>
• Key appointments	
• Launch of Cancer Research Theme and the Beat Cancer Project	
• Launch of Heart Disease Research Theme	
• Transition of SAHMRI's first research group: SCVCT	
• Tree Topping Ceremony	
• Progress on SAHMRI's flagship facility	
<b>WORLD - CLASS FACILITY</b>	<b>16</b>
• Vision for the SAHMRI facility	
• Development of a new health and medical precinct	
<b>GOVERNANCE</b>	<b>18</b>
• Constitution	
• Founding Members	
• Meet the Executive Team	
• Board of Directors	
• Strategic Partnerships	
• Frameworks	
• Occupational Health, Safety and Welfare (OHS&W)	
<b>OUR RESEARCH</b>	<b>28</b>
• SAHMRI's Research Themes	
• Research Pillars	
• Scientific Advisory Committee	
• European Molecular Biology Laboratory	
• Academic Health Science System	
• Translation Strategy	

# CHAIRMAN'S REPORT



This past year has been a productive and exciting time for SAHMRI and it is remarkable to think that we are still in the early stages of our organisation's promising journey.

Through SAHMRI, we have a once-in-a-lifetime opportunity to make a transformative difference to the health of all citizens in South Australia and across Australia. In fact, this is probably the last time an independent, flagship health and medical research institute will be built anywhere in Australia.

Just think – over time we can, and will, grow to become one of the biggest and best research institutes in Australia, translating our research into real health outcomes for generations to come.

The establishment of SAHMRI will enable us to attract more research dollars into the state, ensuring that South Australia maintains and increases its share of national research grant funding, which has been in decline.

We will also see improved research infrastructure and an increase in collaborations and partnerships, as SAHMRI will strive to work together with the brightest and the best across Australia's borders and overseas.

Another exciting aspect of SAHMRI is the calibre of research talent we are already attracting to South Australia, including Professor Steve Wesselingh, our outstanding Executive Director, and other leading researchers from all over the world – most of whom are returning home to South Australia after working and living abroad.

Recent executive and theme leader appointments also prove that SAHMRI is on the right track to creating a world-class research institute and I am confident that this trend will continue with future theme leader and staff appointments.

As you may have seen from North Terrace, our iconic research facility is also taking shape, making a dramatic difference to Adelaide's skyline. Due to the growing demand for high-quality and innovative research, we are already planning to expand into additional research space across our state.

However, in addition to all of the hard work and dedication from SAHMRI's staff and Board of Directors, an organisation like ours depends on people in the community who are willing to play a vital role in our organisation's success. We need people to help us build and strengthen community awareness and support for our Institute.

With that, I am extremely honoured to announce that the Governor of South Australia, His Excellency Rear Admiral Kevin Scarce AC CSC RANR, has agreed to become SAHMRI's inaugural Patron and we look forward to working with His Excellency as our organisation continues to grow.



L to R: Professor Steve Wesselingh, His Excellency Rear Admiral Kevin Scarce AC CSC RANR and Mr Raymond Spencer

SAHMRI will be the game changer in this exciting new era in health and medical research. As a world-class flagship health and medical research facility, SAHMRI will take the future health and wellbeing of our community in a new direction.

I would like to personally thank those who have dedicated their time and efforts so far in developing this organisation. It truly is a great honour to work alongside a driven executive leadership team and chair the Board of a growing organisation that will remain committed to leading the way in new discoveries, treatments and improved health for the entire community.

Raymond Spencer  
Chair, SAHMRI

# EXECUTIVE DIRECTOR'S REPORT



With just over a year to go until the official opening of our iconic flagship research institute, it is incredible to reflect on another successful year at SAHMRI, and my first full year as Executive Director of such an exciting organisation.

It is amazing to think that by late 2013, we will be fully operational in our new research facility on North Terrace, adjacent to the site of the new Royal Adelaide Hospital (NRAH) and occupied by over 600 leading health and medical researchers from Australia and beyond.

The co-location of SAHMRI and the NRAH will create a dynamic health and medical precinct, combining the best practice in health care delivery with health and medical research. A strong health and medical research community is not only crucial for both the state's science and education credentials, but also for the lifesaving clinical work undertaken in our hospitals every day.

South Australia can be a leader in health and medical research. However, as a small state, it is important that the level of collaboration between research institutions, universities, the government, the business sector and the community is boosted to ensure this competitiveness.

That is why our goal is to create a 'culture of research excellence' across South Australia by working together with state and federal governments, the universities and the health and medical research community.

As an independent medical research institute, we are unique amongst Australian research institutes in

that our founding members are the three universities and the State Government. This structure has enabled us to strengthen the collaborations and partnerships that exist between the University of Adelaide, Flinders University, and the University of South Australia.

The close alignment of health services, universities and SAHMRI will enable research to be translated more rapidly into clinical practice, achieving benefits for patients. It will also transform the nature of health care by increasingly moving from treatment of disease towards prevention and better public health.

Over the past year we have made great progress in developing our Institute. In addition to the construction of our flagship facility, we have made several key staff appointments and have worked to develop and implement our first research programs and platforms.

The recruitment, and retention, of research talent is the key to maximising SAHMRI's potential. Right now we're focusing on attracting key researchers across our research themes, selected on the basis of health need and South Australian research strengths.

Our six themes are: Cancer; Heart Disease; Healthy Mothers, Babies and Children; Mind and Brain; Nutrition and Metabolism; and Infection and Immunity. We have also embedded a special focus on Aboriginal and Torres Strait Islander Health into all of our research themes and activities.

These themes represent major challenges for the Australian population now and for the next generation and we're already attracting world leaders in their fields to SAHMRI to lead each theme.

I'm thrilled that Professor Steve Nicholls has returned home to Adelaide to lead our Heart



Disease theme after a prestigious international career, most recently at the world renowned Cleveland Clinic in the United States. Steve is a distinguished and proven leader in his field, and the perfect person to develop SAHMRI's heart disease research strategy, attract and lead the Institute's first heart disease research teams and to provide strategic leadership of heart disease research activities across the Institute.

We also welcomed Professor Alex Brown, SAHMRI's Indigenous Health Theme Leader. Alex has a national and international profile in Indigenous cardiovascular and metabolic disease research and policy development. His experience in Aboriginal Health, service delivery research and public health, as well as capacity to engage government and leading agencies in setting the agenda in Aboriginal cardiovascular disease control will be a huge benefit to SAHMRI.

Professor Neil Dear was also appointed as the inaugural Director, Research and Biomedical

Services. Returning to South Australia from the United Kingdom, Neil will be responsible for overseeing the establishment of and providing strategic leadership for SAHMRI's research and biomedical services. We are privileged to have found such an experienced and dynamic leader to develop and implement SAHMRI's research strategy, at such an exciting time for our Institute and for South Australia.

The upcoming years are very promising for SAHMRI. With the expansion of our research facilities and teams, as well as the development and implementation of our research programs, we have a great deal to look forward to and I am proud to be working with the SAHMRI team to drive our organisation into the future.

**Professor Steve Wesselingh**  
Executive Director



# ABOUT THE INSTITUTE

BY FOCUSING ON RESEARCH EXCELLENCE, SAHMRI WILL UNDOUBTEDLY ACHIEVE LONG-TERM, POSITIVE BENEFITS FOR SOUTH AUSTRALIA, AUSTRALIA AND BEYOND.

## OVERVIEW

SAHMRI is one of the most significant developments in the field of health and medical research in Australia. In fact, the Institute is already recognised nationally for its unique partnership model, its iconic research facility and for its success in recruiting outstanding researchers to South Australia from all over the world.

As a new entity, SAHMRI will significantly increase the nation's capacity for leading scientific research by:

- Building the largest team of outstanding researchers in Australia, who will work together in the search for better treatments and cures for some of the world's most challenging diseases
- Creating a world-class precinct of medical research and clinical application, with state-of-the-art laboratories and equipment in a purpose-built, iconic, 25,000 square metre facility
- Actively fostering and nurturing a new generation of the finest research minds, and undertaking extensive and interactive community engagement and education programs.

## ESTABLISHMENT OF SAHMRI

While South Australia has a strong history of health and medical research, the amount of government funding allocated to South Australian researchers has steadily declined over the past decade in comparison to other Australian states.

Recognising the challenges facing health and medical research, the South Australian Government commissioned the 2008 *Review of Health and Medical Research in South Australia*, conducted by Professor John Shine and Mr Alan Young AM, which recommended the establishment of a dedicated, flagship research institute for South Australia.

In response to this recommendation, the South Australian Government committed to establish SAHMRI in 2008, and the Federal Government allocated \$200 million to build the research facility.

SAHMRI was incorporated as South Australia's first independent health and medical research institute in December 2009.



## BUILDING RESEARCH CAPACITY

The development of SAHMRI allows South Australia to consolidate and enhance its position in the health and medical research sector, nationally and internationally. SAHMRI will seek to build the capacity of all research activity in South Australia, with the goal of creating a 'culture of excellence' in health and medical research across the state.

The development of SAHMRI will also assist South Australia in maintaining and increasing its share of national research grant funding.

SAHMRI's strategic agenda is to continue to recruit and retain research stars for South Australia. To achieve this, the Institute is fostering South Australia's emerging talent as well as recruiting some of the world's leading health and medical scientists to Adelaide.

By continuing to recruit and retain talent, and bringing them together with the high calibre researchers already in South Australia, SAHMRI will enable the state to turn the trend around and to increase its share of national research grant funding. South Australia will be placed in a better position to win additional funding from a number of sources, such as the National Health and Medical Research Council (NHMRC), other federal funding sources, industry and philanthropic support.

## VISION

To translate science into health.

## MISSION

To fundamentally improve the quality of life for all people, through innovative, world-class and groundbreaking health and medical research. As South Australia's flagship research facility, SAHMRI will provide a clear focal point for health and medical research in the state.

SAHMRI will be a vibrant, globally-recognised institute that harnesses dynamic collaborations to deliver tangible health outcomes and community impacts.

## VALUES

SAHMRI values:

- Excellence
- Integrity, Accountability and Transparency
- Boldness

SAHMRI is:

- Friendly, Fast and Flexible
- Imaginative and Daring
- Collaborative and Enabling
- Driven, Persistent and Focused

# 2011-12 HIGHLIGHTS

THIS HAS BEEN ANOTHER PRODUCTIVE AND EXCITING YEAR AT SAHMRI AND IT'S INCREDIBLE TO THINK THAT THIS IS STILL ONLY THE BEGINNING.

## KEY APPOINTMENTS

### Research Theme Leaders

SAHMRI is now recruiting the Institute's inaugural theme leaders. The following appointments were made in 2012:



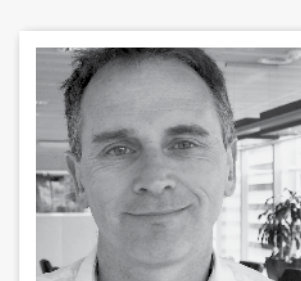
**Professor Alex Brown**  
SAHMRI Indigenous Health Theme Leader

In February 2012, Professor Alex Brown was appointed as SAHMRI's Indigenous Health Theme Leader, and he assumed the role in a full-time capacity in July 2012. Professor Brown is an Aboriginal medical doctor and researcher. For the last 13 years, Professor Brown has managed the local Centre for Disease Control in Alice Springs, controlling outbreaks of disease, immunisations programs and the surveillance of disease before starting in research for the Menzies School of Health Research. In 2007 he was appointed to set up a research unit and program in Central Australia with Baker IDI Heart and Diabetes Institute, with a focus on heart disease and diabetes in Aboriginal people. His current research includes heart disease and diabetes in Indigenous people, Aboriginal men's health, social and emotional wellbeing and understanding the links between depression and chronic disease and health services research – improving chronic disease outcomes for disadvantaged populations.



**Professor Stephen Nicholls**  
SAHMRI Heart Foundation Heart Disease Theme Leader

Professor Stephen Nicholls was appointed to lead the Institute's Heart Disease Research Theme in May 2012. Professor Nicholls is the Professor of Cardiology at the University of Adelaide and the inaugural SAHMRI Heart Foundation Heart Disease Theme Leader. His research interests span the translational spectrum from the factors influencing the biological activity of HDL, through to development and use of novel plaque imaging modalities and ultimately large-scale clinical trials of antiatherosclerotic therapies. Professor Nicholls recently returned to Adelaide from the Cleveland Clinic in the United States to establish the translational cardiovascular research program at SAHMRI.



**Professor Neil Dear**  
Director, Research and Biomedical Services

Professor Neil Dear was appointed as the inaugural Director, Research and Biomedical Services in March 2012. Returning to South Australia from the United Kingdom, Professor Dear will be responsible for overseeing the establishment of and providing strategic leadership for SAHMRI's research and biomedical services in Adelaide. Professor Dear returns to Adelaide and joins SAHMRI after five years at the Leeds Institute of Molecular Medicine at the University of Leeds in the United Kingdom, where he was a PI focusing on genetics of disease, and Director of Biomedical Services, Director of MBChB Student Admissions and a Member of Institute Executive.





# 2011-12 HIGHLIGHTS

## LAUNCH OF CANCER RESEARCH THEME AND THE BEAT CANCER PROJECT



In February 2012, on the eve of World Cancer Day, SAHMRI launched the start of its foray into cancer research, in collaboration with Cancer Council SA, the South Australian Government and the state's three major universities – the University of Adelaide, Flinders University and the University of South Australia.

Over two hundred health leaders, cancer researchers and cancer supporters dressed in yellow gathered at the Adelaide Convention Centre to witness the launch of SAHMRI's Cancer Research Theme and the unveiling of the Beat Cancer Project – a \$10 million investment by Cancer Council SA on behalf of its donors into targeted cancer research over the next five years.

This will be matched by the SA Government to reach a pool of funds totaling \$20 million - making it the single largest source of funding for cancer research and infrastructure within South Australia.

SAHMRI's partnership with Cancer Council SA and the SA Government is a great example of the efficiencies that can be created by pooling funds into a dedicated research venture. This partnership will enable SAHMRI to seek better treatments, cures and even ways to prevent this disease in its many manifestations.

## LAUNCH OF HEART DISEASE RESEARCH THEME



In May 2012, SAHMRI formalised a collaborative partnership with the Heart Foundation to plan the way forward in working with the research community to prevent and improve the quality of life for those suffering from heart disease.

While SAHMRI and the Heart Foundation will continue to work independently to achieve their research goals, it is anticipated that there will be further opportunities for collaboration in the future and this relationship will enhance and broaden research opportunities on a range of specific projects.

The 200-strong audience was addressed by SAHMRI's Executive Director, Professor Steve Wesselingh, Premier of South Australia, Hon Jay Weatherill MP, Associate Professor Amanda Rischbieth, CEO of Heart Foundation SA and also Professor Stephen Nicholls, SAHMRI Heart Foundation Heart Disease Theme Leader.

Guests were asked to wear red to the event to show unity in the fight against heart disease, and in honour of the event, SAHMRI's Project Team flew a red flag on one of the large cranes on the site of the new SAHMRI facility.

## TRANSITION OF SAHMRI'S FIRST RESEARCH GROUP: SAHMRI CARDIOVASCULAR CLINICAL TRIALS



SAHMRI is transitioning a series of research groups from SA Health, which have a strategic alignment to SAHMRI's vision. The first of these was the Flinders Clinical Research Group (FCR), now called SAHMRI Cardiovascular Clinical Trials (SCVCT). The group transitioned to SAHMRI in January 2012.

The group's principal business is conducting commercial clinical trials for pharmaceutical companies. It also conducts 'investigator driven' trials, undertakes Academic Research Organisation trials and undertakes research grant activities.

SCVCT's goals are to demonstrate ethical integrity and leadership in clinical research, flexibility and adaptability in embracing research directions, and provide, maintain and develop appropriate skill sets for excellence in performance.

## TREE TOPPING CEREMONY



In August 2012, SAHMRI celebrated the completion of the vertical expansion of the flagship facility by holding an official Tree Topping Ceremony.

The practice of "topping out" a new building can be traced to the ancient Scandinavian practice of placing a tree on the top of a new building to appease the tree-dwelling spirits of their ancestors. In modern times, an evergreen tree is placed upon the structure to symbolise growth and to bring luck.

Over 70 people, including SAHMRI staff, representatives from the State and Federal Government, members of the SAHMRI Board and representatives from the Project Team attended the ceremony, which was held on Level 9 (the highest point) of the new facility to recognise this significant milestone for SAHMRI.

A memento reflecting the structural elements of the facility, consisting of pieces of steel reinforcing, formwork (Bondek), timber formwork and concrete was signed by representatives from the State and Federal Government, members of the SAHMRI Board and representatives from the Project Team.



# 2011-12 HIGHLIGHTS



## PROGRESS ON SAHMRI'S FLAGSHIP FACILITY

Work continued to progress on the site of the new 25,000 square metre SAHMRI facility, currently under construction on North Terrace in Adelaide's west end.

Significant milestones for 2011-12 include:

- The completion of the sub-structure
- The completion of the Cyclotron vault
- The location/placement of the Cyclotron within the vault
- The completion of the superstructure
- The 'topping off' of the building, marking the completion of the vertical expansion of the facility.

Features of the facility:

- Total Gross Floor Area of 25,000 square metres
- Flexible floor space and research modules
- A vivarium and dedicated space for advanced technology facilities, including a Cyclotron
- Space for bioimaging strategy and clinical imaging
- Cafés and retail stores
- Public interaction and education space.





# WORLD-CLASS FACILITY

THE SAHMRI FACILITY WILL BE A TRULY ICONIC AND INSPIRING WORK PLACE FOR OUR MOST CREATIVE HEALTH AND MEDICAL RESEARCHERS.



## VISION FOR THE SAHMRI FACILITY

By late 2013, SAHMRI will be fully operational in its new state-of-the-art, purpose-built research facility. In addition to the flagship research facility that will house over 600 leading health and medical researchers, the Institute encompasses research facilities across South Australia.

The flagship SAHMRI facility is:

- A flexible, responsive and adaptable building
- Challenging, innovative and willing to take risks
- A community resource which is inclusive, accessible and inviting
- An education resource
- An inspiring building for the next generation of researchers.

## DEVELOPMENT OF A NEW HEALTH AND MEDICAL PRECINCT

The SAHMRI facility is a key component of Adelaide's new dynamic, world-class health and medical precinct that will also be home to the new Royal Adelaide Hospital (NRAH).

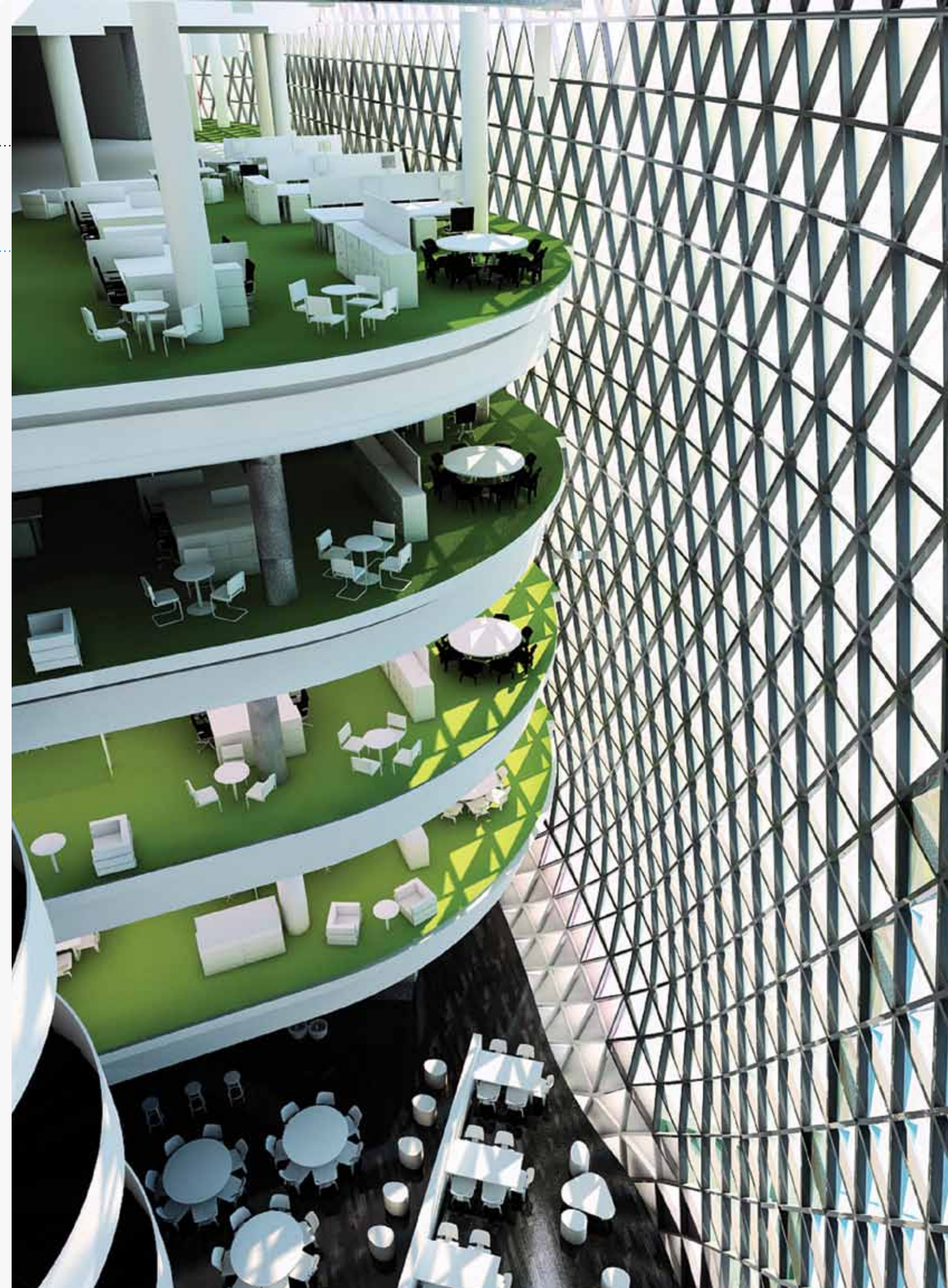
The NRAH is now under construction on North Terrace alongside SAHMRI and scheduled to open in 2016. The new state-of-the-art hospital will replace the existing Royal Adelaide Hospital further along North Terrace, which opened in 1840.



The SAHMRI facility will promote a flexible, innovative and healthy environment that is responsive to the needs of staff, clinicians and the community. It will also interact with Adelaide's public transport, cycling and walking networks to provide a means of engagement with local communities.

Additionally, the co-location of SAHMRI and the NRAH will strengthen the relationship that already exists with the University of South Australia, the University of Adelaide and Flinders University, as well as other research and training institutions across South Australia.

SAHMRI is also a key part of Adelaide's Riverbank Precinct master plan. The Riverbank Precinct is one of Adelaide's prominent public spaces, offering panoramic views across the River Torrens, the North Adelaide Parklands, Adelaide Oval and Memorial Drive.





# GOVERNANCE



## CONSTITUTION

Under its Constitution, SAHMRI has been established to:

- Develop a centre of excellence in both Australia and internationally for the benefit of the community in undertaking, promoting and expanding research
- Facilitate the transfer and practical application of knowledge acquired from its research activities to improve the health and wellbeing of the community
- Undertake and facilitate health and medical research relating to human medicine and health
- Provide and maintain research facilities and services as SAHMRI sees fit, including participation in the planning, design and construction of the premises
- Develop, promote and create opportunities for the development and promotion of knowledge acquired from research activities
- Work collaboratively and facilitate collaboration among universities, other relevant research institutions and the government to achieve high-quality outcomes associated with research planning and execution and the acquisition and use of resources, staffing and funding
- Attract funding from within and outside Australia for the conduct of research relating to human medicine or health.

## FOUNDING MEMBERS

SAHMRI was formally established as a company limited by guarantee under the Commonwealth Corporations Act 2001, on 21 December 2009.

The founding members of SAHMRI are:

- The South Australian Treasurer
- The South Australian Minister for Health
- The Department of Further Education, Employment, Science and Technology (DFEEST)
- The University of Adelaide
- Flinders University and
- University of South Australia.



**Front L - R:** Professor Steve Nicholls, Professor Steve Wesselingh, Ms Aphrodite Tsakalos, Professor Neil Dear  
**Back L - R:** Ms Amanda McIlroy, Dr Caroline Miller, Mr Barry Porter, Ms Michelle Gheorghiu, Ms Kay Gerard, Ms Heather Croucher  
**Absent:** Professor Alex Brown

## MEET THE EXECUTIVE TEAM

### Executive Director

#### Professor Steve Wesselingh

Following an extensive global search, Professor Steve Wesselingh was appointed as SAHMRI's inaugural Executive Director in December 2010 and assumed the role in full-time capacity on 4 October 2011. Professor Wesselingh is an internationally-recognised expert in viruses that affect the human brain. Prior to SAHMRI, Professor Wesselingh was the Dean of Medicine, Nursing and Allied Health Sciences at Monash University in Victoria.

### Chief Operating Officer

#### Amanda McIlroy

Ms Amanda McIlroy was seconded from Ernst and Young to oversee the start-up of SAHMRI, with overall responsibility for the Institute's day-to-day management and operations, including finance, human resources, administrative operations and public relations. Ms McIlroy has more than 12 years' experience in the areas of internal audit, risk management, corporate governance and has extensive experience in the health sector. She also has qualifications in environmental management systems and occupational health and safety.

### General Counsel

#### Heather Croucher

Ms Heather Croucher is responsible for the management of legal issues affecting SAHMRI and has over 25 years' experience in the legal field. Prior to joining SAHMRI, Ms Croucher was a Partner with the largest private law firm in South Australia. She has also worked in the SA Government's legal office (the Crown Solicitor's Office) and has held in-house roles in the public and private sectors.

### Director, Infrastructure and Capital Planning

#### Michelle Gheorghiu

Ms Michelle Gheorghiu brings a genuine passion for health, medical research and project management to the SAHMRI project. With her extensive experience in the private and public health sector, she draws from her technical expertise, strategic business planning and operational background and finds creative solutions to a range of complex challenges. For the past twelve years, Michelle has led major infrastructure projects in South Australia for the Department of Health.



# GOVERNANCE

## Chief Financial Officer

### Barry Porter

Mr Barry Porter is responsible for the financial management, reporting and systems at SAHMRI, at both an operational and strategic level. He has over 20 years' experience in business administration, finance and IT in both the public and private sectors. Prior to joining SAHMRI he was the CFO and Deputy CEO of Mnet Group, an ASX-listed company he helped establish ten years ago. Mr Porter has also worked as a Finance Manager in the airline industry for ten years, as an Auditor at the Auditor-General's Department and at the University of Adelaide for three years.

## Human Resources Manager

### Aphrodite Tsakalos

Ms Aphrodite Tsakalos was appointed to the role of Human Resources Manager in January 2012 and is responsible for the full range of human resource, industrial relations, occupational health and safety, and injury management functions. With over 20 years generalist human resource management experience, Ms Tsakalos has previously worked in the healthcare, consultancy, manufacturing and distribution industries within the private sector.

## Executive Officer

### Dr Caroline Miller

In 2012, Dr Caroline Miller was appointed as SAHMRI's Executive Officer. Dr Miller also leads a program of research in population health, focused on tobacco control and obesity prevention. Caroline has qualifications in psychology, public health and economics. Prior to joining SAHMRI, Dr Miller was General Manager, Cancer Control at Cancer Council SA.

## Development and Communications Manager

### Kay Gerard

Ms Kay Gerard is responsible for the overall development, implementation and management of SAHMRI's communications and marketing activities and for the delivery of SAHMRI's fundraising agenda. Prior to joining SAHMRI she worked internationally across governmental affairs, higher education and not-for-profit sectors.

## SAHMRI Heart Foundation Heart

### Disease Theme Leader

#### Professor Steve Nicholls

Professor Stephen Nicholls was appointed to lead SAHMRI's Heart Disease Research Theme in May 2012. Professor Nicholls is the Professor of Cardiology at the University of Adelaide and the inaugural SAHMRI Heart Foundation Heart Disease Theme Leader. His research interests span the translational spectrum from the factors influencing the biological activity of HDL, through to development and use of novel plaque imaging modalities and ultimately large-scale clinical trials of antiatherosclerotic therapies. Professor Nicholls recently returned to Adelaide from the Cleveland Clinic in the United States to establish the translational cardiovascular research program at SAHMRI.

## Indigenous Health Theme Leader

### Professor Alex Brown

Professor Alex Brown was appointed as SAHMRI's Indigenous Health Theme Leader in February 2012, and he assumed the role in a full-time capacity in July 2012. Professor Brown is an Aboriginal medical doctor and researcher. For the last 13 years Professor Brown has managed the local Centre for Disease Control in Alice Springs, controlling outbreaks of disease, immunisations programs and the surveillance of disease before starting in research for the Menzies School of Health Research. In 2007 he was appointed to set up a research unit and program in Central Australia with Baker IDI Heart and Diabetes Institute, with a focus on heart disease and diabetes in Aboriginal people. His current research includes heart disease and diabetes in Indigenous people, Aboriginal men's health, social and emotional wellbeing, understanding the links between depression and chronic disease and health services research – improving chronic disease outcomes for disadvantaged populations.

## Director, Research and Biomedical Services

### Professor Neil Dear

Professor Neil Dear was appointed as the inaugural Director, Research and Biomedical Services in March 2012. Returning to South Australia from the United Kingdom, Professor Dear will be responsible for overseeing the establishment of and providing strategic leadership for SAHMRI's research and biomedical services in Adelaide. Professor Dear returns to Adelaide and joins SAHMRI after five years at the Leeds Institute of Molecular Medicine at the University of Leeds in the United Kingdom, where he was a PI focusing on genetics of disease, and Director of Biomedical Services, Director of MBChB Student Admissions and a Member of Institute Executive.

## BOARD OF DIRECTORS

SAHMRI's Board of Directors has been operational since January 2010 and is focused on providing strategic direction necessary to establish a world-class research institute in South Australia.

The Board is responsible for the overall corporate governance of the organisation and providing oversight of the organisation's strategic plan.

The SAHMRI Board members are:

- Mr Raymond Spencer (Chair)
- Mr Alan Young AM, Baker Young Stockbrokers (Deputy Chair)
- Professor Michael Barber, Flinders University
- Professor Justin Beilby, University of Adelaide
- Professor John Hopwood, Head, Lysosomal Disorders Research Unit
- Professor Steve Wesselingh, SAHMRI
- Mr David Swan, SA Health (from 20 October 2011)
- Professor Peter Høj, University of South Australia (until 7 September 2012).



**Mr Raymond Spencer**

Chair, SAHMRI Board

Mr Raymond Spencer, who was born in Adelaide and studied at the University of Adelaide, has returned to South Australia after over 40 years of living and working in the USA, India and Europe where he gained skills in leadership and international business, management planning, technology, finance, organisational culture and mergers and acquisitions.

In addition to being Chair of SAHMRI, Raymond is Chairman of Capgemini's Financial Services Global Business Unit (FS GBU) and the South Australian Economic Development Board (EDB). Raymond is also a director of Rubicon Technology Inc. (RBCN), a NASDAQ listed manufacturer of advanced electronic materials. He is an investor in and director of a number of private companies and is a member of the investment committee in three US-based venture funds.

Highly experienced in directing international projects, Raymond has worked in eighteen countries including the United States, Australia, India, UK, Hong Kong, Japan, and Singapore. He has also advised corporations and not-for-profit groups on organisational, cultural, and leadership initiatives.

# GOVERNANCE



**Mr Alan Young AM**

Deputy Chair, SAHMRI Board  
Chair, SAHMRI Development, Marketing and Fundraising Committee

Mr Young was co-author of the Shine Young Report, a review of Health and Medical Research in South Australia commissioned by the South Australian Government. The South Australian Government accepted the recommendation to establish a new flagship health and medical research institute and subsequently received a grant of \$200 million out of the 2009 federal budget to establish SAHMRI.

Mr Young is Co-Founder and Joint Managing Director of Baker Young Stockbrokers Limited. He is also the current Founder/Chair of Belvidere Winery, Chair of the Australian Central School of Art, Chair of Solstice Media Ltd, Co-Founder/Chair of Flinders Medical Centre Foundation, Founder/Chair of Flinders Bio Medical Enterprises Pty Ltd, Director of Signostics Inc, Director of Hub IT Pty Ltd, and Member of Business Development Advisory Panel of St Vincent de Paul (SA) Inc.

In 2009 Mr Young was awarded the Order of Australia as a Member in the General Division for service to the community, particularly through business advisory roles with health, medical research and education organisations.

Mr Young's strengths lie in funding, establishing and developing new businesses and endeavours to trade in the long-term, and in business management advice.



**Professor Michael Barber**

Chair, Audit, Finance and Risk Committee

Prior to taking up the role of Vice-Chancellor at Flinders University in 2008, Professor Barber spent five years as an Executive Team member at CSIRO. He has also held positions at the University of Western Australia as Pro Vice-Chancellor (Research), Australian National University as Professor of Mathematics and Dean, Faculty of Science, and has also worked internationally at the University of California and University of Washington.

Professor Barber's research interests include research policy and evaluation, statistical mechanics and materials science. He is also well known for his contributions to the development of Australian science policy, having served on the Australian Research Council and the Council of the Australian Academy of Science as the Academy's Secretary, Science Policy from 2001-2005.

In 1992 he was elected a Fellow of the Australian Academy of Science for his work in statistical mechanics, particularly the theory of phase transitions and in 2009 he was recognised as one of the inaugural Fellows of the Society for Industrial and Applied Mathematics. In 2009 he was elected a Fellow of the Australian Academy of Technological Sciences and Engineering in recognition of his contribution to Australian science and technology through senior leadership in universities and CSIRO.

Professor Barber is a regular contributor to national and international reviews.

Within South Australia Professor Barber is currently a member of the SA State Advisory Council, Committee for Economic Development of Australia and works across a range of peak bodies to contribute to the development of science and research policy within the State.

Professor Barber is a director of AARNet Pty Ltd and a Fellow of the Australian Institute of Company Directors.



**Professor Justin Beilby**

Chair, Facility Committee

Professor Justin Beilby was appointed Executive Dean of the Faculty of Health Sciences at the University of Adelaide in July 2005.

As Executive Dean, he oversees all undergraduate training in medicine, nursing, dentistry, health sciences, psychology and public health at the University of Adelaide. Prior to that, Professor Beilby held the position of Professor and Head of the Department of General Practice, at the University of Adelaide from 2002 - 2005.

Professor Beilby has been involved in research and evaluation with workforce planning, primary care financing, chronic illness and the quality use of medicines for over 20 years, in both urban and rural settings.

He has published widely in asthma, diabetes, point-of-care testing and primary care financing. He has been intimately involved in national and state health policy research, chairing the General Practice Item Restructuring Working Group and evaluating the Medical Benefits Scheme asthma item numbers.

Professor Beilby is currently a member of the Medical Services Advisory Committee, Economic Sub-Committee. He has been a member of the Strategic Research Initiatives Working Group of the NHMRC. He was a Commissioner in National Hospital and Health Reform Commission in 2008 - 2009 and has extensive experience in the health system reform having been a member of the Clinical Senate and SA Health Performance Council.



**Professor John Hopwood AM FAA**

Chair, Scientific Advisory Committee

Professor John Hopwood is Head of the Lysosomal Diseases Research Unit, SA Pathology, Adelaide. The Unit is a large multidisciplinary group researching lysosomal storage disorders nationally and internationally.

The Lysosomal Diseases Research Unit has become world-renowned for its research capabilities in this area and the translation of research findings into state-of-the-art diagnostic services and therapeutics. The Unit has remained at the international forefront of research into the diagnosis, treatment and biology of lysosomal diseases.

The Unit has generated several world firsts, particularly the isolation of the genes involved in some of these disorders and the development of first-ever FDA-approved treatments for two disorders, which in 2005 and 2006 were marketed world-wide. These outcomes have led to improved quality of life for patients and multi-million dollar royalty returns to South Australia. This represents one of the largest public sector commercialisation outcomes in South Australia and possibly Australia.

Professor Hopwood has mentored 23 PhD students and 34 Post-Doctoral scientists; has over 400 peer-reviewed scientific publications, over 30 international patents and over \$35 million in competitive research funding. He is an affiliate Professor in the Department of Paediatrics at the University of Adelaide and Department of Pharmacy at the University of South Australia.

Over the past eight years Professor Hopwood has been honoured with the Lemberg Medal for Excellence in Biochemistry, a Member of the Order of Australia, a Fellow of the Australian Academy of Science, Honorary Fellow of the Royal College of Pathologists of Australasia, SA Premier's Science Award for Excellence in Commercialisation of Research, SA Scientist of the Year, ATSE Clunies Ross Award, and most recently has been awarded the prestigious 2009 CSL Florey Medal for significant achievements in biomedical science and human health advancement.



# GOVERNANCE



**Professor Steve Wesselingh**  
Executive Director, SAHMRI

Professor Steve Wesselingh is SAHMRI's inaugural Executive Director. Prior to SAHMRI he was the Dean of the Faculty of Medicine, Nursing and Health Sciences at Monash University, one of Australia's leading health Faculties. Prior to taking up the Deanship, he was Director of the Burnet Institute, an independent medical research institute that specialises in infectious diseases, immunology and public health.

His undergraduate and doctoral training was at Flinders University and Medical Centre and his post-doctoral training was completed at Johns Hopkins Medicine in the United States.

Professor Wesselingh is an Infectious Diseases Physician with research interests in Neurovirology, HIV and vaccine development. He has consistently worked towards the integration of high quality medical research with health-care delivery, leading to improved health outcomes for Australia and the poorly resourced countries of the region.



**Mr David Swan**  
Chief Executive, SA Health (from 20 October 2011)

Mr David Swan is the Chief Executive of the South Australian Department for Health and Ageing. Before taking up the position in March 2011, Mr Swan spent four years as the Executive Director, Operations within the Department for Health and Ageing.

Mr Swan has over 27 years experience as a chief executive in the public and private health care system in Australia, including two years as Chief Executive of the Southern Adelaide Health Service and over four years as Chief Executive of the Women's and Children's Hospital.

Holding a Bachelor of Health Science through the Charles Sturt University and a Graduate Diploma in Management at Monash Mount Eliza Business School, Mr Swan has also been National Executive Director of Calvary Healthcare Group, responsible for a range of public and private hospitals in four Australian states.

Mr Swan is an Associate Fellow of the Australian College of Health Service Executive and has also held Directors positions on the Women's Hospitals of Australasia, the Australian Private Hospitals Association and State President of the Private Hospitals Association of Tasmania.

Mr Swan is a Board Director for Health Workforce Australia, National E-Health Transition Authority (NEHTA) and the South Australian Health and Medical Research Institute (SAHMRI).



**Professor Peter Høj**  
SAHMRI Board (until 7 September 2012)

Professor Peter Høj was Vice Chancellor and President of the University of South Australia until 7 September, 2012.

In April 2012 he was appointed Vice Chancellor and President of the University of Queensland and will take assume that position on 8 October 2012. He is Deputy Chair of Universities Australia, and a member of the Australian Qualifications Framework Council.

He is a Fellow of the Australian Academy of Technological Sciences and Engineering and a foreign member of the Danish Academy of Sciences and Letters.

During 2011-12 Professor Høj ceased as a Member of the Higher Education Research Reference Group and Board Member of Business South Australia. He also ceased as a Member of the National Research Infrastructure Council upon its conclusion on 30 June 2012.



# GOVERNANCE



## STRATEGIC PARTNERSHIPS

The development of strategic partnerships is a key cornerstone of SAHMRI's operating strategy. SAHMRI will actively engage with research groups and organisational entities outside the flagship research facility with the purpose of developing and fostering collaboration across organisational boundaries.

The Audit, Finance and Risk Committee has oversight of the establishment of these partnerships. SAHMRI has entered into strategic partnership agreements with the University of Adelaide, Flinders University and the University of South Australia. In these agreements, the parties agree to collaborate with each other to advance a progressive research agenda in South Australia and to create an environment where world-class research can be conducted.

It is anticipated that additional strategic partnerships will be established with local, national and international groups and organisations in line with the Institute's research strategy.

## FRAMEWORKS

### Risk management framework

The Audit, Finance and Risk Committee has been delegated responsibility for overseeing the risk management framework, including the monitoring and reporting of key strategic and operational risks to the SAHMRI Board.

SAHMRI's approach to risk management is based on the principles described by ISO 31000 Risk Management – Principles and Guidelines. SAHMRI has a Risk Policy and Framework in place that enables risks to be identified, analysed, evaluated, treated and monitored.



### Fraud framework

SAHMRI has a Fraud and Corruption Control policy that outlines SAHMRI's commitment to the prevention and detection of fraud and corruption, and creating and maintain a culture of honest and ethical behaviour. That policy applies to all SAHMRI employees and contractors and is updated and communicated regularly.

Allegations or suspicions of fraudulent activity may be reported openly to management or anonymously to the company secretary. Any reports are investigated promptly and the outcome of any investigation is reported to the Audit, Finance and Risk Committee. SAHMRI also undertakes proactive fraud detection exercises aimed at early identification of irregularities. Where appropriate, suspected fraudulent activities will be referred to relevant law enforcement agencies.

## OCCUPATIONAL HEALTH AND SAFETY WELFARE (OHS&W)

SAHMRI has an Occupational Health, Safety and Welfare policy in place, which describes SAHMRI's commitment to the health and wellbeing of staff. The policy applies to all staff members, contractors, clients and members of the public who visit SAHMRI's premises.

The policy is designed to prevent injury in the workplace, provide a support system to respond to any work-related accidents and injuries and to inform management and staff of their obligations and responsibilities for ensuring safe work practices.

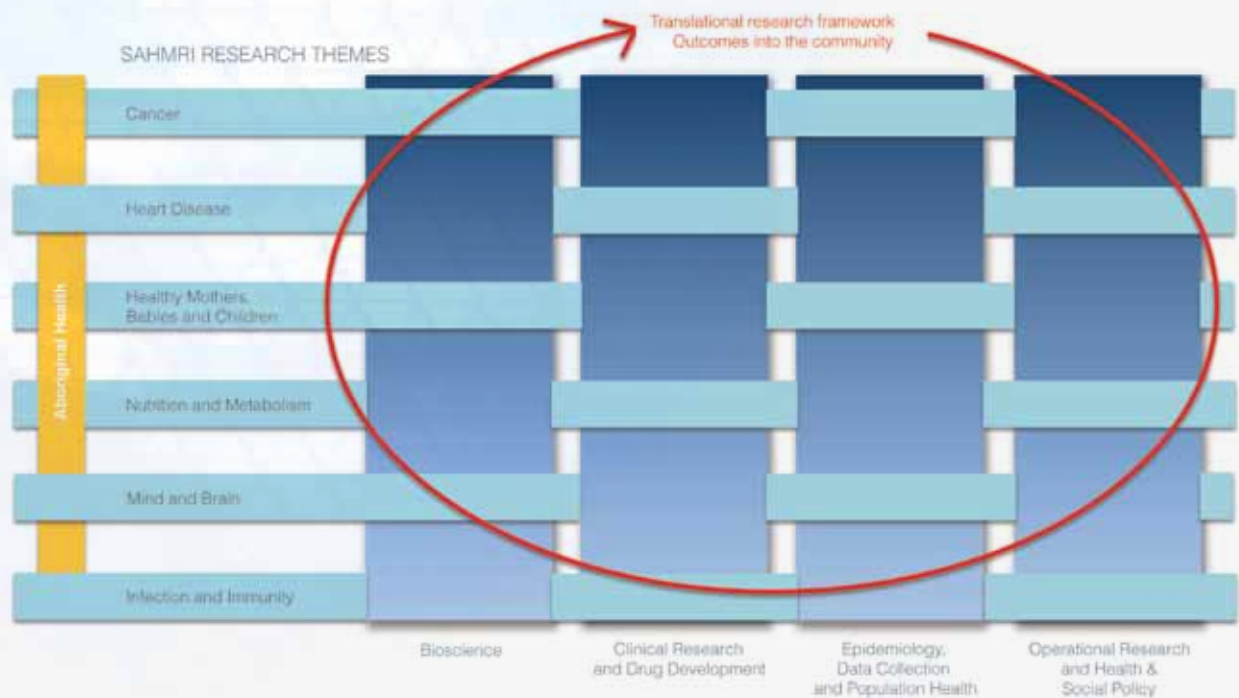
Staff involvement and contribution toward improved OHS&W performance is both welcomed and encouraged.



# OUR RESEARCH

## SOUTH AUSTRALIAN HEALTH AND MEDICAL RESEARCH INSTITUTE (SAHMRI) RESEARCH THEMES

SAHMRI will provide leadership in some elements of the research themes and the Strategic Partners will provide leadership in other elements of the research themes.



### CANCER

The Cancer theme was launched in collaboration with Cancer Council SA on 3 February 2012, the eve of World Cancer Day, at the Adelaide Convention Centre. Although the Theme Leader will start in 2013, work is underway in the theme.

SAHMRI now leads the Beat Cancer Project; a major collaborative initiative to advance cancer research in South Australia. The Beat Cancer Project is an initiative of Cancer Council SA, SA Health, the University of Adelaide, Flinders University, the University of South Australia and SAHMRI. The project provides \$20m in total over five years from Cancer Council SA and SA Health for funding cancer research. The universities and other institutions provide matched funding, substantially increasing the total pools of funds committed to cancer research.

Overall, the Beat Cancer Project aims to develop a larger pool of funds for cancer research, increase the capacity for researchers to attract more national and international research grants and build a stronger cancer research workforce within South Australia. A key objective is the translation of research results to inform complementary research activity, health policy development and practice.

Also within the Cancer theme, SAHMRI is leading the establishment of a South Australian Comprehensive Cancer Consortium (SACCC). The purpose of the SACCC is to bring together complementary research and clinical expertise in cancer in order to improve cancer research and the delivery of cancer services across the state.



### HEART DISEASE

The Heart Disease theme was launched in May 2012 and included the announcement of Professor Steve Nicholls as the SAHMRI Heart Foundation Heart Disease Theme Leader. The theme is being stratified into three major areas of focus, namely (i) disease of blood vessels (acute coronary syndromes, stable coronary disease, peripheral arterial disease, stroke), (ii) heart structure and function (cardiomyopathies, sleep disorders and heart disease, valve disorders, heart failure) and (iii) heart rhythm disorders. To bring together expertise within the state, monthly workshops are being coordinated which have a specific focus within each of the theme's three major areas. Each workshop will be delivered by Professor Steve Nicholls and two lead researchers who will act as champions for the development of each of these areas for SAHMRI. These workshops commenced in the latter half of 2012.

### INDIGENOUS HEALTH

Professor Alex Brown has been appointed as the Theme Leader, Indigenous Health. Alex is currently focusing on community engagement, exploring possible research collaborations, establishing an Indigenous Scientific Advisory Council and defining key platforms within the Indigenous Health theme.

# OUR RESEARCH



## RESEARCH PILLARS

SAHMRI is currently establishing the following Research Pillar Committees:

- Bioscience to be chaired by Professor Steve Wesselingh
- Clinical Research and Drug & Device Discovery to be chaired by Professor Steve Nicholls
- Health Services Research to be chaired by Professor Derek Chew
- Population Health and Health & Social Policy Research to be chaired by Professor David Roder.

The Pillar Committees will include experts in the different fields of research, and will provide strategic advice to support the research themes.

## SCIENTIFIC ADVISORY COMMITTEE

SAHMRI's Scientific Advisory Committee (SAC) is chaired by Professor John Hopwood and includes some of Australia's most eminent health and medical scientists. The role of the SAC is to review:

- The research conducted within SAHMRI on an annual basis to ensure research undertaken at SAHMRI is of excellent quality and scientific merit, as well as aligned with SAHMRI's research strategy
- SAHMRI's strategic plan and provide advice as to how SAHMRI can achieve its strategic goals through the research undertaken
- SAHMRI's translational framework and provide advice as to how SAHMRI can facilitate research along the translational pathway in an efficient and effective manner.

The SAC meets annually and will inform the delivery of SAHMRI's research strategy.

### SAC Members:

- Professor Steve Wesselingh
- Professor John Hopwood AM FAA
- Professor Vicki Anderson
- Professor Ian Frazer FAA
- Professor Richard Head
- Professor Doug Hilton FAA
- Professor John Lynch
- Professor Alan Pearson AM
- Professor Nadia Rosenthal
- Professor John Shine AO FAA
- Professor Prash Sanders
- Professor Fran Baum



## EUROPEAN MOLECULAR BIOLOGY LABORATORY

The European Molecular Biology Laboratory (EMBL) is a flagship laboratory for basic research in molecular biology and is recognised for excellence in this field. Australia has a formal affiliation with EMBL, building on Australia's scientific strengths in cell biology, clinical research, stem cells and regenerative medicine, chemical biology and genetic epidemiology.

Together with the state's three major universities, SAHMRI is in the process of developing three accredited EMBL Australia Partner Laboratories. A key benefit to SAHMRI is the opportunity for national and international collaboration with a world-class institution and network, in line with SAHMRI's strategic objectives.

## ACADEMIC HEALTH SCIENCE SYSTEM

An Academic Health Science System (AHSS) is a partnership between one or more universities and healthcare providers focusing on research, clinical services, education and training. AHSSs are intended to ensure that breakthroughs in medical research lead to direct clinical benefits for patients.

SA Health and SAHMRI are working in partnership to establish an AHSS in South Australia, involving the state's universities, Local Health Networks and Medicare Locals to better integrate education, research and clinical service delivery for the benefit of South Australians.

## TRANSLATION STRATEGY

In November 2011, SAHMRI hosted a Translational Research Symposium. The Symposium was supported by the Joanna Briggs Institute and featured four international guest speakers: Dr Ian Graham, Professor Jos Kleijnen, Dr Margaret Harrison and Dr Jack Needleman. Symposium presentations focused on the translational research cycle, the translation from discovery research to clinical research, the translation from clinical research to clinical action and translation to policy.

In 2012, Dr Ian Graham and Dr Margaret Harrison returned to SAHMRI as visiting International Research Fellows in Translation to develop a Research Translation Framework for SAHMRI. The work they undertook will inform the development of a translation strategy as well as research translation measurement tools.





# SAHMRI

SOUTH AUSTRALIAN HEALTH AND  
MEDICAL RESEARCH INSTITUTE


Level 9, 121 King William Street,  
Adelaide SA 5000

PO Box 11060,  
Adelaide, SA 5001

[WWW.SAHMRI.COM](http://WWW.SAHMRI.COM)

Follow us on:

[www.facebook.com/sahmri](http://www.facebook.com/sahmri) 

[www.twitter.com/sahmri\\_tweets](https://twitter.com/sahmri_tweets) 

ABN: 54 141 228 346